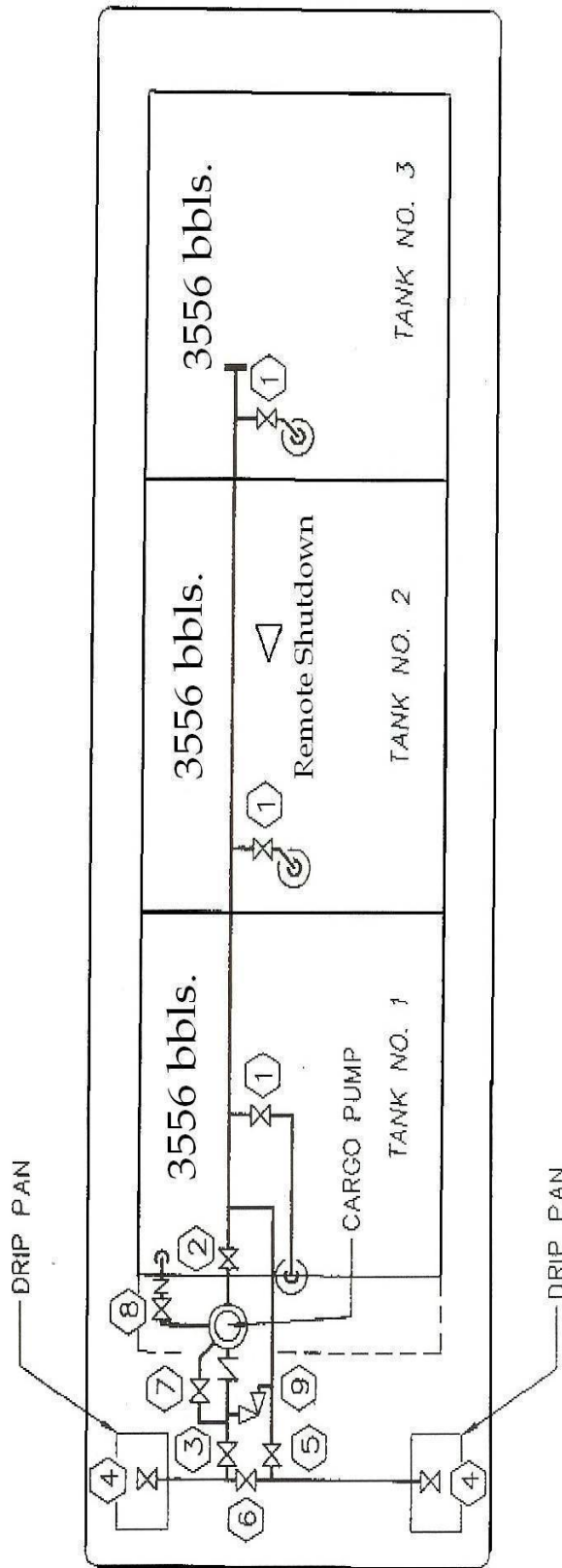


# RCT 12

- |     |                      |     |                        |
|-----|----------------------|-----|------------------------|
| 1 - | CARGO TANK VALVE     | 5 - | CARGO FILL VALVE       |
| 2 - | PUMP SUCTION VALVE   | 6 - | HEADER CROSSEVER VALVE |
| 3 - | PUMP DISCHARGE VALVE | 7 - | PUMP BY-PASS VALVE     |
| 4 - | CARGO HEADER VALVE   | 8 - | VENT VALVE             |
|     |                      | 9 - | RELIEF VALVE           |



CARGO PIPING