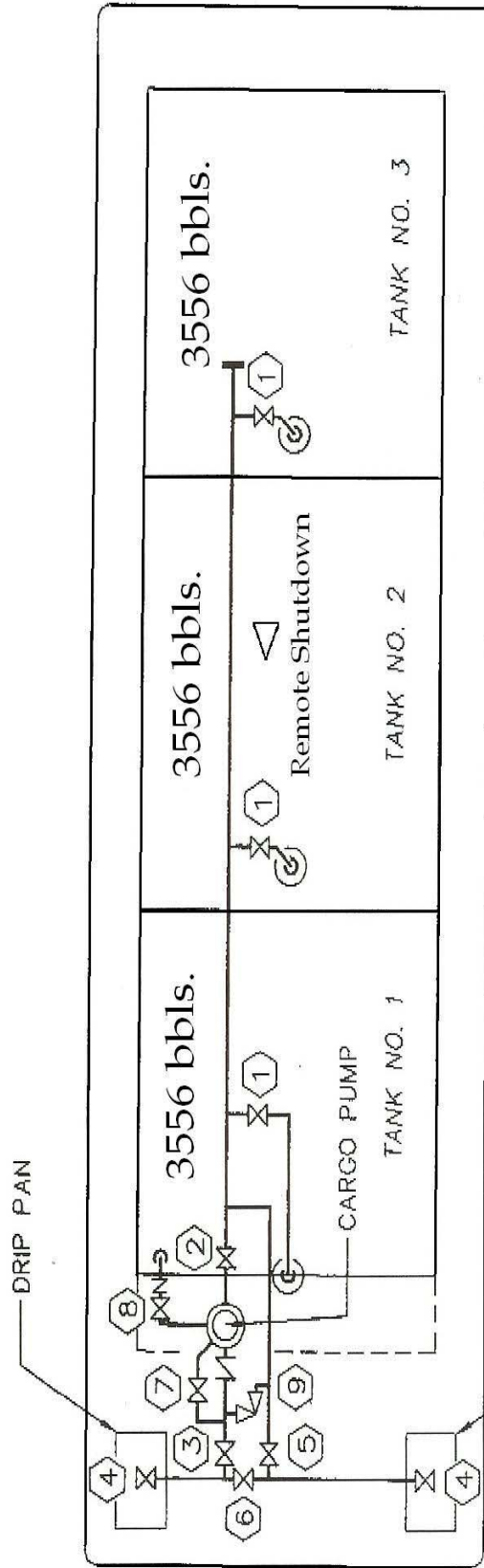


RCT 7

- 1 - CARGO TANK VALVE
- 2 - PUMP SUCTION VALVE
- 3 - PUMP DISCHARGE VALVE
- 4 - CARGO HEADER VALVE
- 5 - CARGO FILL VALVE
- 6 - HEADER CROSSOVER VALVE
- 7 - PUMP BY-PASS VALVE
- 8 - VENT VALVE
- 9 - RELIEF VALVE



CARGO PIPING