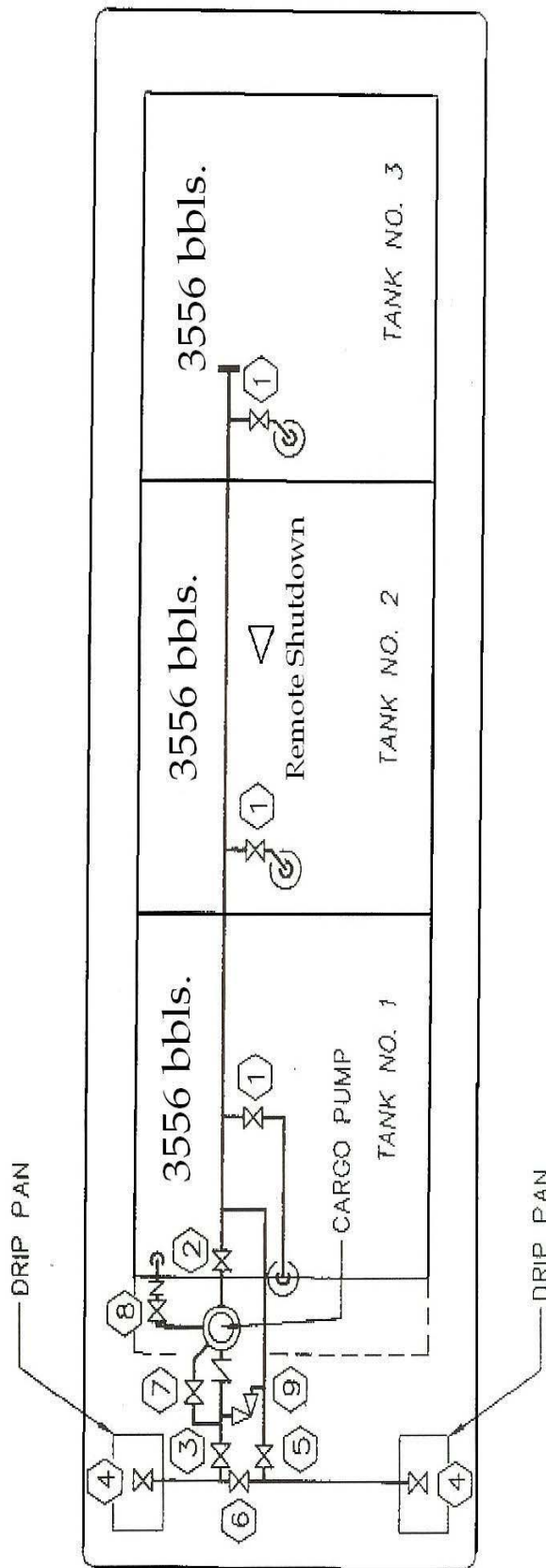


RCT 9

- | | | | |
|-----|----------------------|-----|------------------------|
| 1 - | CARGO TANK VALVE | 5 - | CARGO FILL VALVE |
| 2 - | PUMP SUCTION VALVE | 6 - | HEADER CROSSEVER VALVE |
| 3 - | PUMP DISCHARGE VALVE | 7 - | PUMP BY-PASS VALVE |
| 4 - | CARGO HEADER VALVE | 8 - | VENT VALVE |
| | | 9 - | RELIEF VALVE |



CARGO PIPING